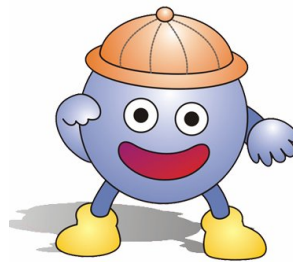




In this issue:

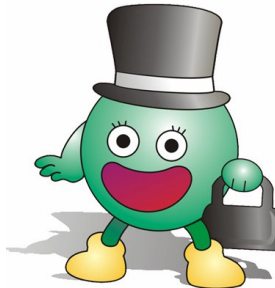
| | |
|--------------------------------------------------------|---|
| H-1B Filing Guidance | 2 |
| New Filing System for I-129s and I-140s | 3 |
| H-2B Attestation | 4 |
| DOS Announced Agreements on Passports with New Zealand | 5 |
| Quick Information Bytes | 6 |

We welcome you to meet the Immis! They help us simplify the immigration process for you. The Immis are in every issue of our newsletter and act as your personal guides to various immigration topics.



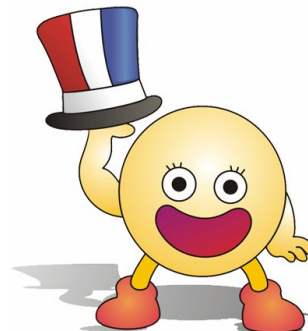
Immi Jr.

Immi Jr. will address nonimmigrant issues



Immi

Immi will address immigrant issues



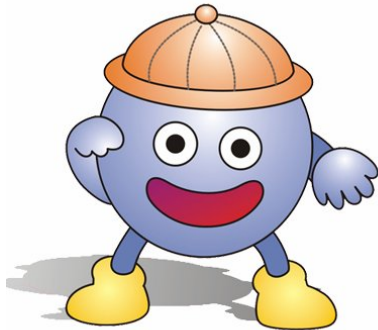
Citizen Immi

Immi will address citizenship issues

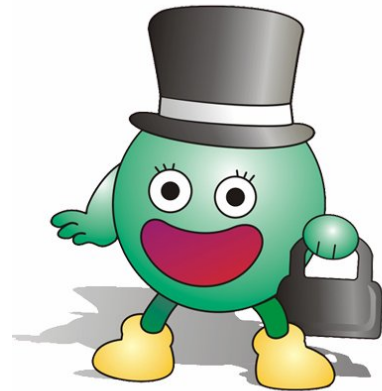
USEFUL INFORMATION:

- Immigration Related Web Sites 7
- Olsen Law Firm Contact Information 8

IMMEDIATE INFORMATIONAL RELEASES



*Immis say: USCIS
will begin accepting
filings for the FY2007
H-1B cap this April 1,
2006.*



USCIS ISSUES H-1B FILING GUIDANCE

SOURCE: AMERICAN IMMIGRATION LAWYERS ASSOCIATION (AILA)

USCIS ISSUES H-1B FILING GUIDANCE

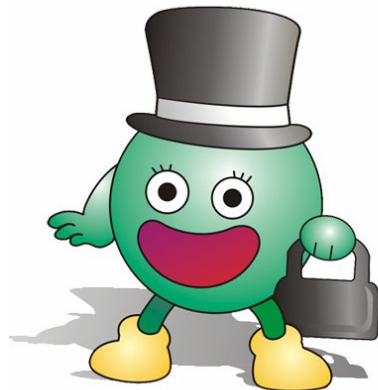
Employers may begin filing petitions for FY 2007 on April 1st

Washington, D.C.– USCIS will begin accepting filings for the FY2007 H-1B cap on **April 1, 2006**. In anticipation of this event, USCIS is reminding the public of important regulatory requirements. H-1B petitioners should keep this emphasis in mind as they prepare petitions in order to avoid delays in processing and possible Requests For Evidence (RFE).

8 CFR 214.2(h)(2)(B) requires that petitioners provide a detailed itinerary of the dates and places where work will be performed if those services will be provided in more than one location. For example, a labor contractor or consultant who hires H-1B workers to work at client sites must provide in advance an itinerary with dates and places where the worker will perform that work.

In addition, 8 CFR 214.1(c)(4) requires that an applicant for extension of status have maintained his or her nonimmigrant status. In situations in which an H-1B worker is changing to an employer other than the one for which the initial H-1B petition was approved, USCIS will require that the worker changing employers demonstrate that he or she actually did perform meaningful work for the original petitioning employer under circumstances not reflective of fraudulent intent in the original petition. In situations in which the H-1B worker is processing abroad, USCIS will work closely with the Department of State to ensure that this same level of integrity is applied to consular processed H-1Bs.

Immi says: Hi, everyone!! Since April 1st, there are only two Service Centers which will process all I-129s and I-140s.



USCIS NOTIFIES EMPLOYERS OF FILING CHANGES

SOURCE: AMERICAN IMMIGRATION LAWYERS ASSOCIATION (AILA)

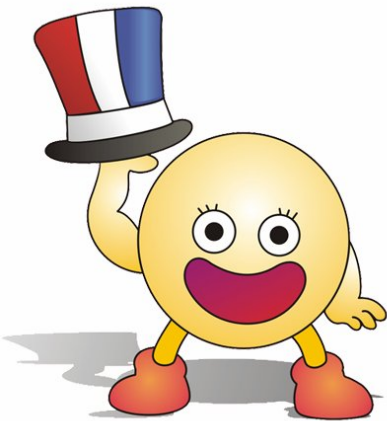
Two Service Centers designated to receive all I-129s and I-140s

Washington, DC – U.S. Citizenship and Immigration Services (USCIS) today announced changes to the filing procedure for two popular employer-sponsored immigration forms. Starting on April 1st, employers filing a Petition for a Non-immigrant Worker (Form I-129) should mail that form directly to the Vermont Service Center. Also starting on April 1st, employers filing an Immigrant Petition for an Alien Worker (Form I-140) should mail that form directly to the Nebraska Service Center. Employers should file accompanying forms at these same centralized locations.

These changes mark the first phase of the USCIS initiative to use centralized filing and bi-specialized adjudication. Through this effort, USCIS will align similar workloads between two “sister” service centers. After April 1st, the Vermont and California Service Centers will process all I-129s and related dependent applications. The Nebraska and Texas Service Centers will process all I-140s and related permanent residency applications. Pairing work between service centers will allow USCIS to better manage cases and improve customer service.

Customers will receive a receipt notice from the service center that will process their case. Applicants and petitioners should note that the filing location for the form type is not necessarily the Service Center that will decide the case. USCIS will continue to received before April 1st using preexisting procedures.

USCIS has previously instructed customers to file I-129 and I-140 petitions at one of its four service centers. Once the amended filing instructions take effect on April 1st, however, USCIS will not reject it to the correct location, and honor the initial receipt date. The April 1st changes, establishing a new filing location for forms I-129, I-140 and related forms, do not affect other aspects of the forms’ instructions and do not change the forms themselves. USCIS will continue to honor previous versions of the forms.



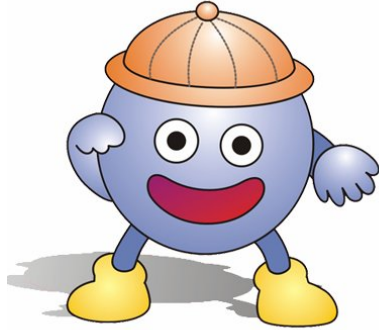
***Citizen Immi says: Remember employers!!
Your petitions for returning H-2B workers do
not count towards the bi-annual H-2B cap.***

USCIS ISSUES SAMPLE H-2B ATTESTATION

SOURCE: AMERICAN IMMIGRATION LAWYERS ASSOCIATION (AILA)

Washington, D.C.– U.S. Citizenship and Immigration Services (USCIS) issued a sample H-2B returning worker attestation for employers to follow when filing petitions including returning H-2B workers. Petitions for returning H-2B workers do not count towards the congressionally mandated bi-annual H-2B cap.

In order to qualify as a returning worker, a worker must have counted against the H-2B numerical cap during any one of the three fiscal years prior to the fiscal year of the approved start date of the H-2B petition. In order to qualify as a returning worker for Fiscal Year 2006, a worker must have counted against the H-2B congressionally mandated cap between October 1, 2002 and September 30, 2005.



Immi, Jr. says: New Zealand travelers, you need to be aware that New Zealand now is one of the countries on the RMAL.

DOS ANNOUNCES AGREEMENT ON PASSPORTS WITH NEW ZEALAND

[SOURCE: AMERICAN IMMIGRATION LAWYERS ASSOCIATION \(AILA\)](#)

United States/Australia/New Zealand Cooperation on Travel Documents

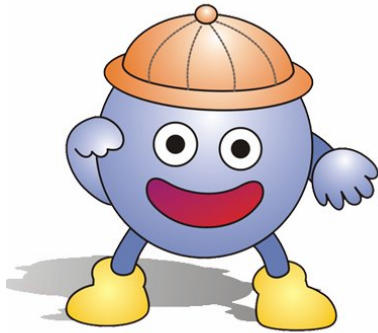
U.S. Assistant Secretary of State for Consular Affairs Maura Harty and the Honorable David Cunliffe, New Zealand Minister of Immigration, today completed the signing of a Memorandum of Understanding to include New Zealand in the passport alert system known as the Regional Movement Alert List (RMAL).

RMAL is an Asia-Pacific Economic Cooperation (APEC) counterterrorism initiative, originally piloted in September 2005 by the United States and Australia as an enhancement to their existing border management systems. It is an automated procedure that shares information on lost, stolen or otherwise invalid passports, and where appropriate, prevents their use for travel. When fully implemented in APEC, RMAL will have the potential to identify up to three million lost or stolen passports across the Asia-Pacific region.

The Memorandum of Understanding signed today expands the program to include the participation of New Zealand, effective March 31, 2006. New Zealand's participation in the RMAL pilot marks a key milestone as the program grows from a bilateral to a multilateral project. The RMAL database will draw on current information to assist in detecting and preventing travel by air of known or suspected terrorists.

RMAL is a specific security commitment that APEC Leaders called for in combating terrorism in the 2003 Bangkok Declaration, the 2004 Santiago Declaration, and the 2005 Busan Declaration. It will enhance the effectiveness of the existing Advance Passenger Information System (APIS) and has the potential to become an important part of the border and transportation security infrastructure of the region.

QUICK INFORMATION BYTES

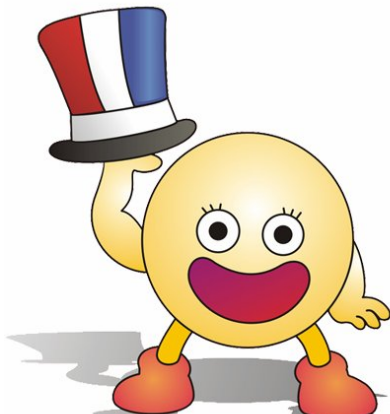
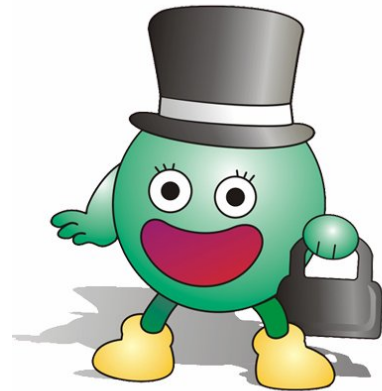


Immi, Jr. says: If an F-1 wants to travel this summer outside the U.S., then beware that the DSO of the school must sign the F-1's I-20.

SOURCE: TERRENCE L. OLSEN, ESQ., OLSEN LAW FIRM

Immi says: Beware that permanent resident interviews via marriage are being scheduled much quicker than ever before.

SOURCE: TERRENCE L. OLSEN, ESQ., OLSEN LAW FIRM



Citizen Immi says: Unless you are very sick or have an event or appointment which is a necessity to attend, then it is best to not reschedule any appointments with the USCIS.

SOURCE: TERRENCE L. OLSEN, ESQ., OLSEN LAW FIRM

QUESTIONS AND ANSWERS

Explanation: If you have questions concerning immigration related issues or concerns and are of a non-advice and pure general interest nature, please e-mail them to tolsen@tlolaw.com.

IMPORTANT IMMIGRATION RELATED WEB SITES

<http://uscis.gov/graphics/index.htm>

- US Citizenship and Immigration Services Web Link

<http://www.dol.gov/>

- Dept. of Labor Web Link

<http://www.state.gov/>

- Dept. of State Web Link

<http://www.embassy.org/>

- Embassies in Washington D.C. Web Link

<http://www.avisonet.net/government/embassies/>

- Embassies Located Inside and Outside U.S. Web Link

CONTACT INFORMATION

Please visit: www.tlolaw.com for our web site

Terrence L. Olsen, Attorney, tolsen@tlolaw.com, 423-648-9390 and 423-648-9370 (for Chinese and Taiwanese language assistance)

Disclaimer

OLSEN LAW FIRM provides the information on these pages as a public service, free of charge. Information contained on these pages is not intended as, and should not be taken as, legal advice. The use of information provided on these pages should not be taken as establishing any contractual or other form of attorney-client relationship between OLSEN LAW FIRM and the reader or user of this information.

While we would like to hear from you, please understand that merely contacting us does not create an attorney-client relationship between us. We cannot represent you or become your lawyers in any way unless (1) we know that doing so would not create conflict of interest with any of the clients we currently represent or have represented in the past and (2) satisfactory arrangements have been made between us for our representation.

While we have provided links to other World Wide Web sites, we cannot be and are not responsible for the contents of these other sites. We expressly disclaim any liability with respect to actions taken or actions not taken based on content received from a third-party web site linked, directly or indirectly, to the OLSEN LAW FIRM web site.

The link to another site is not to be construed in any way as an endorsement of the host, the site, or the information contained therein, nor is such link to be inferred as an association or affiliation with the host.

Listing of related or included practice areas herein by individual attorneys or by OLSEN LAW FIRM does not constitute or imply a representation of Certification of Specialization.

Immi, Jr., Immi, and Citizen Immi © 2002 by Terrence L. Olsen.