



OLSEN LAW FIRM IMMIGRATION NEWSLETTER

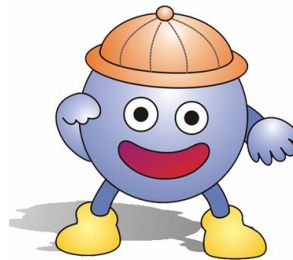
MARCH 2006

VOLUME 3

In this issue:

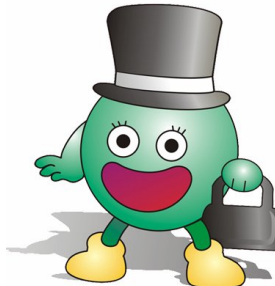
Electronic U.S. Passport	2
Updated Visa Bulletin	3
Western Hemisphere Travel	4
Quick Information Bytes	5

We welcome you to meet the Immis! They help us simplify the immigration process for you. The Immis are in every issue of our newsletter and act as your personal guides to various immigration topics.



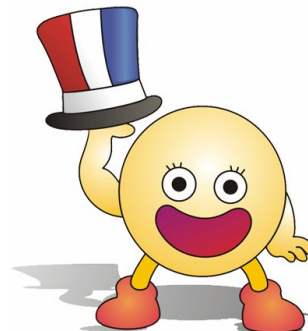
Immi Jr.

Immi Jr. will address nonimmigrant issues



Immi

Immi will address immigrant issues



Citizen Immi

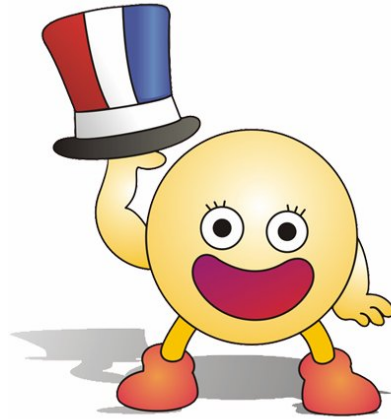
Immi will address citizenship issues

USEFUL INFORMATION:

- Immigration Related Web Sites 6
- Olsen Law Firm Contact Information 7

IMMEDIATE INFORMATIONAL RELEASES

*Citizen Immi says: Ha!! U.S. citizens!!
The U.S. Department of State has been
issuing electronic passports since this
New Year.*



US DOS BEGINS ISSUANCE OF ELECTRONIC PASSPORTS

SOURCE: AMERICAN IMMIGRATION LAWYERS ASSOCIATION (AILA)

Department of State Begins Issuance of an Electronic Passport

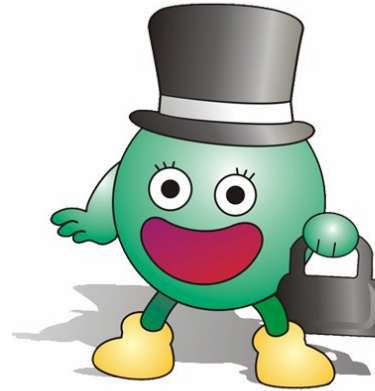
The Department of State is phasing-in the issuance of the new Electronic Passport (e-passport) to better facilitate international travel for U.S. citizens and enhance border security. On December 30, 2005, the Department began limited production of the first-ever U.S. e-passports. As part of a pilot program, the Department of State is now issuing diplomatic passports and soon official passports in electronic format. The e-passport integrates the latest concepts in electronic document protection and readability.

The new passport combines face recognition and contactless chip technology. The chip, embedded in the cover of the passport, holds the same information that is printed in the passport: name, date of birth, gender, place of birth, dates of passport issuance and expiration, passport number, and photo image of the bearer. Previously issued passports without electronic chips will remain valid until their expiration dates.

To address privacy concerns, the Department has incorporated an anti-skimming device in the passport's front cover. The Department also included basic access control (BAC) technology to prevent skimming and eavesdropping. The anti-skimming device and the BAC technology, when taken together, will mitigate unauthorized reading of the e-passport.

The Department plans to issue the first full validity U.S. e-passports to the American public later this year and plans to issue e-passports at all domestic passport agencies by the end of 2006.

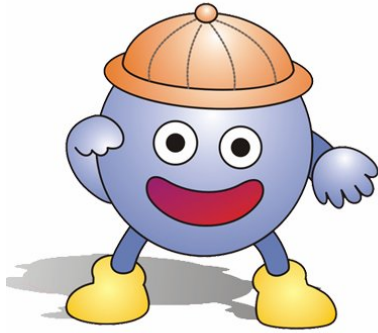
Immi says: Let's look at the Visa Bulletin for March 2006.



VISA BULLETIN MARCH 2006

SOURCE: AMERICAN IMMIGRATION LAWYERS ASSOCIATION (AILA)

	All Chargeability Areas Except Those Listed	CHINA	INDIA	MEXICO	PHILIPPINES
Employment-Based					
1 st	C	01JUL03	01JUL04	C	C
2 nd	C	01JUL02	01JAN02	C	C
3 rd	01MAY01	01MAY01	01JAN01	22MAR01	01MAY01
Schedule A Workers	C	C	C	C	C
Other Workers	01OCT01	01OCT01	01OCT01	01OCT01	01OCT01
4 th	C	C	C	C	C
Certain Religious Workers	C	C	C	C	C
5 th	C	C	C	C	C
Targeted Employment Areas/Regional Centers	C	C	C	C	C



Immi says: U.S. citizen travelers, you need to be aware of the Western Hemisphere Travel issue.

FA&Qs on WESTERN HEMISPHERE TRAVEL

SOURCE: AMERICAN IMMIGRATION LAWYERS ASSOCIATION (AILA)

1) What is the Western Hemisphere Travel Initiative?

The Western Hemisphere Travel Initiative will require all travelers, including U.S. citizens, to and from the Americas, the Caribbean, and Bermuda to have a passport or other accepted document that establishes the bearer's identity and nationality to enter or re-enter the United States. This is a change from prior travel requirements. The goal is to strengthen border security and facilitate entry into the United States for U.S. citizens and legitimate foreign visitors.

2) Who will the Travel Initiative affect?

The travel document initiative will affect all United States citizens traveling within the Western Hemisphere, who will now be required to carry a passport or other accepted document. It will also affect certain foreign nationals who currently are not required to present a passport to travel to the United States namely most Canadian citizens, citizens of the British Overseas Territory of Bermuda and Mexican citizens.

3) When will the Travel Initiative be implemented?

In the proposed implementation plan, which is subject to a period of initial public comment, the Initiative will be rolled out in phases, providing as much advance notice as possible to the affected public to enable them to meet the terms of the new guidelines.

The proposed timeline will be as follows:

December 31, 2006 – Requirement applied to all air and sea travel to or from Canada, Mexico, Central and South America, the Caribbean, and Bermuda.

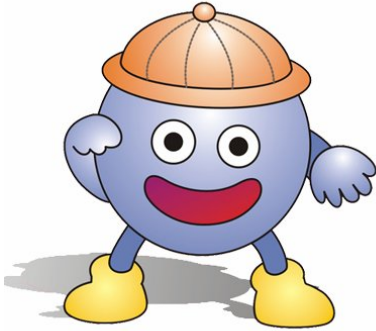
December 31, 2007 – Requirement extended to all land border crossings as well as air and sea travel.

4) Why is the U.S. Government implementing the Travel Initiative?

The Intelligence Reform and Terrorism Prevention Act of 2004 (IRTPA) mandated that the U.S. Secretaries of Homeland Security and State develop and implement a plan to require U.S. citizens and foreign nationals to present a passport or other appropriate secure identity and citizenship documentation when entering the United States.

For many years U.S. citizens, and some citizens of other countries in the Western Hemisphere including Canadians, have not been required to present a passport or other specific forms of secure identification to enter the U.S. Instead, a wide variety of less secure documentation has historically been accepted. In light of the new security efforts, the United States is requiring travelers to have a passport or other accepted secure document for entry into the United States.

QUICK INFORMATION BYTES

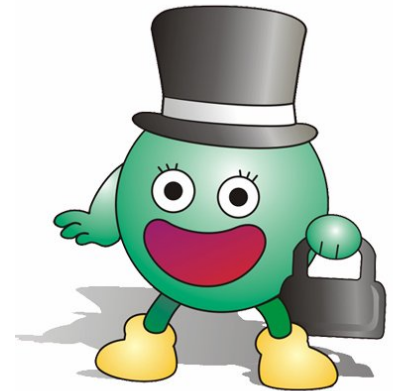


Immi, Jr. says: All F-1 issues should be first answered by the international student's university/college.

SOURCE: TERRENCE L. OLSEN, ESQ., OLSEN LAW FIRM

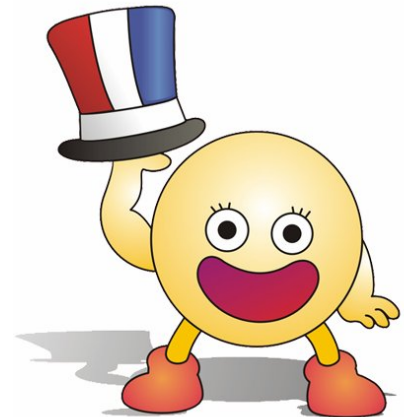
Immi says: Beware that new/initial H1B petitions will be allowed to be filed as of April 1, 2006.

SOURCE: TERRENCE L. OLSEN, ESQ., OLSEN LAW FIRM



Citizen Immi says: For a naturalization interview, government questions will be asked orally and the English test will be performed in a written format.

SOURCE: TERRENCE L. OLSEN, ESQ., OLSEN LAW FIRM



QUESTIONS AND ANSWERS

Explanation: If you have questions concerning immigration related issues or concerns and are of a non-advice and pure general interest nature, please e-mail them to tolsen@tlolaw.com.

IMPORTANT IMMIGRATION RELATED WEB SITES

<http://uscis.gov/graphics/index.htm>

- US Citizenship and Immigration Services Web Link

<http://www.dol.gov/>

- Dept. of Labor Web Link

<http://www.state.gov/>

- Dept. of State Web Link

<http://www.embassy.org/>

- Embassies in Washington D.C. Web Link

<http://www.aviso.net/government/embassies/>

- Embassies Located Inside and Outside U.S. Web Link

CONTACT INFORMATION

Please visit: www.tlolaw.com for our web site

Terry Olsen, Attorney, tolsen@tlolaw.com, 423-648-9390 and 423-648-9370 (for Chinese and Taiwanese language assistance)

Disclaimer

OLSEN LAW FIRM provides the information on these pages as a public service, free of charge. Information contained on these pages is not intended as, and should not be taken as, legal advice. The use of information provided on these pages should not be taken as establishing any contractual or other form of attorney-client relationship between OLSEN LAW FIRM and the reader or user of this information.

While we would like to hear from you, please understand that merely contacting us does not create an attorney-client relationship between us. We cannot represent you or become your lawyers in any way unless (1) we know that doing so would not create conflict of interest with any of the clients we currently represent or have represented in the past and (2) satisfactory arrangements have been made between us for our representation.

While we have provided links to other World Wide Web sites, we cannot be and are not responsible for the contents of these other sites. We expressly disclaim any liability with respect to actions taken or actions not taken based on content received from a third-party web site linked, directly or indirectly, to the OLSEN LAW FIRM web site.

The link to another site is not to be construed in any way as an endorsement of the host, the site, or the information contained therein, nor is such link to be inferred as an association or affiliation with the host.

Listing of related or included practice areas herein by individual attorneys or by OLSEN LAW FIRM does not constitute or imply a representation of Certification of Specialization.

Immi, Jr., Immi, and Citizen Immi © 2002 by Terrence L. Olsen.